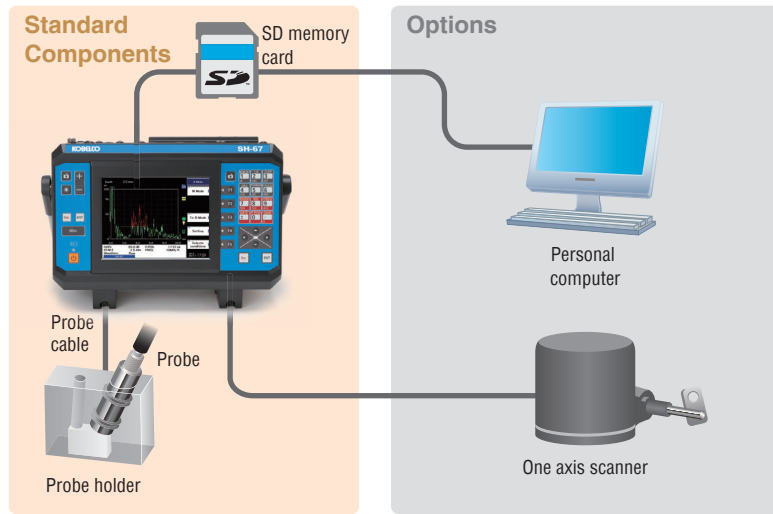


Equipment Configuration



Standard Components

SH-67:	1
Probe:	1
Probe holder:	1 (designed and manufactured for each work)
Probe cable and other attachments:	1 set
Battery:	1
AC adapter:	1
SD memory card:	1

KOBELCO

Measuring Equipment of the Hardened Layer Depth SH-67

Nondestructive measurement of induction hardened layer depth

Specifications

	Item	Performance	
Measuring casedepth function	Object to be measured	Depth of the induction hardened layer	
	Measurement range	0.7 to 15mm	
	Measurement resolution	0.1mm	
	Measurement repeatability	±0.1mm (per one location)	
	Scanner interface	Included (The scanner is optional.)	
Ultrasonic testing function	Sensibility	80 dB or more (5 MHz narrow band)	
	Adjustable gain	110 dB with 0.1 dB pitch	
	Center frequency and band width	0.25/0.5/1/2/3/4/5/10/15/20/25 MHz	
	Amplification linearity	±3% or less	
	Test range	1 to 14,556mm (longitudinal mode in steel)	
	Display time-base linearity	±1% or less	
Common specifications	AC adapter	AC100 to 240V±10%, 50/60Hz±3Hz, Power consumption: approx. 20 W	
	Battery	Lithium-ion battery	
	Battery operating time	Approx. 8 hrs (Operating time is subject to the operation condition and ambient temperature.)	
	Ambient temperature	0 to 40°C during operation, -20 to 60°C during storage	
	Display and screen size	6.5" TFT color LCD (Super luminosity LED liquid crystal display)	
	External dimensions (mm), Mass (kg)	286 (W) × 180 (H) × 110 (D) (not including the projection), 3.5 kg (including a battery)	
	Body case	Waterproof and dustproof standard: Compliance with IP66. Made of reinforced ABS resin (front and back) and aluminum alloy (midsection)	
	Card slot	SD memory card	
	External interface	Connector	USB (master/slave) LAN, VGA, Encoder (two-axis) DC input (A dedicated AC adapter is used.) Earphone microphone (JEITA RC-5240)



CAUTION!

Read the instruction manual carefully before using the SH-67.

KOBELCO INSPECTION & SERVICE CO.,LTD.

Sales & Marketing Department

2-3-1, Shinhamma, Arai-cho, Takasago-City, Hyogo 676-8670, JAPAN

Tel: +81-79-445-7253 Fax: +81-79-445-7156

E-mail: sisco.eigy@kobelco.com

Tokyo Office

15th floor, ON Bldg., 5-9-12 Kitashinagawa, Shinagawa-ku, Tokyo 141-8688, JAPAN

Tel: +81-3-5739-5346 Fax: +81-3-5739-5348

<http://www.sisco.kobelco.com>

The specifications are subject to change without prior notice.

●Distributor



KOBELCO INSPECTION & SERVICE CO.,LTD.

High Operational Efficiency and Cost Savings!

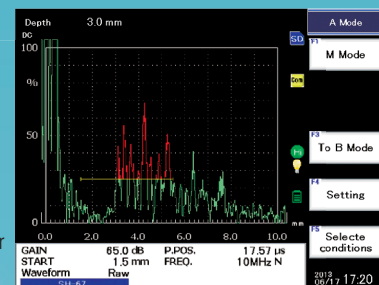
~ Ultrasonic method for measuring hardened layer depth ~



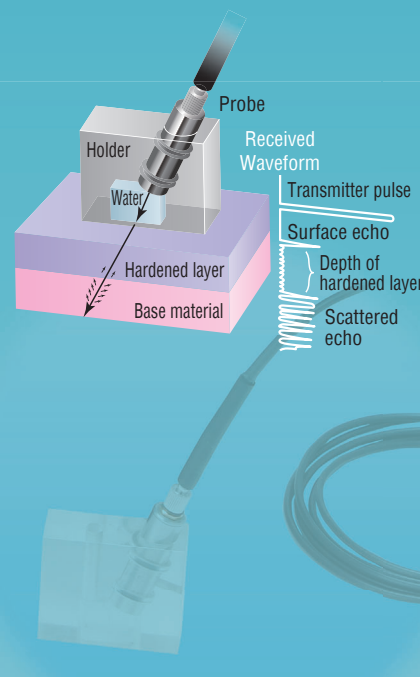
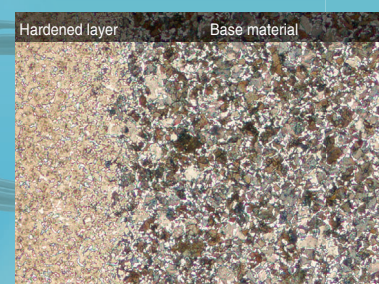
Measurement Principle

- 1 The case-hardened layer has a finer metal texture than the non-hardened layer below it.
- 2 Ultrasonic waves pass through the hardened layer and then scatter in the base material.

Result of measurement



Microscope photograph of boundary



Features

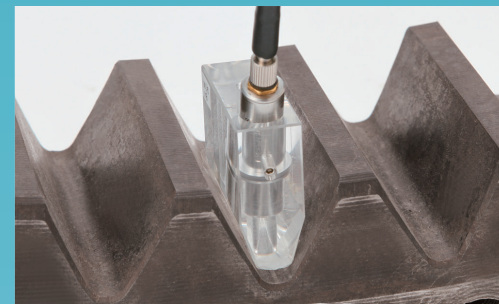
Simple ultrasonic measurement

High sensitivity probe

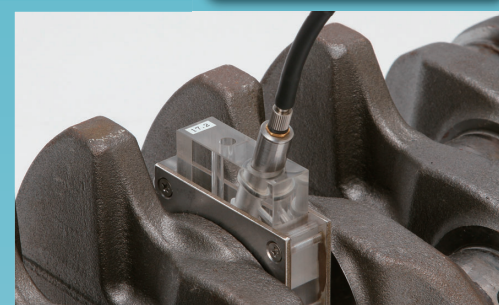
The highly sensitive convergent probe provides accurate measurement.

Hermetically sealed immersion probe holder

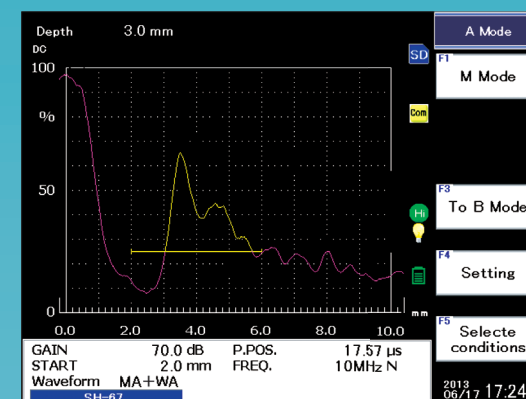
The optimal design ensures stable measurement.



The holder is designed and manufactured for each work.

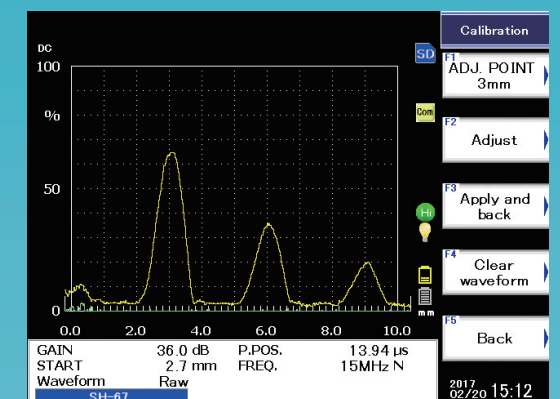


Waveform processing to clearly identify the boundary



Simple parameter settings by the Setup screen

Automatic calibration for easy setup



Applications

Measurement of induction hardened layer depth

Wind power facilities and construction machinery :
Swivel bearings

Automotives and vessels :
Crank shafts, gears, shafts, etc.

Other induction hardened products

